



EVOLUTION

Surgical procedures have evolved...



So have we.

SURGICAL TABLE ACCESSORIES

AMTAI
Advanced Medical Technology And Innovation

Table of Content

**Please note:
Clark Sockets and
Side Rail Locks
are sold separately.**

Lock and Sockets	1
Anesthesia Screens	2
General Accessories	3
Headrests	5
Shoulder Surgery	8
Arm Supports	9
Body Supports	11
Leg Supports	15
Orthopedic	18
Imaging	19
Fluid Collection	21
Accessories Listed by Procedure	22
Product Index - Alphabetical	25
Product Index - Listed by Item ID	27

Lock and Sockets

ACC0001



Clark Socket

Used for attaching accessories which have round rod sizes 5/8"~11/16" (16~18 mm) onto 3/8" x 1 1/8" safety side rails, providing radial adjustment.

PATIENT WEIGHT CAPACITY:

Up to 1000 lb (454 kg) with various types of accessories.

COMPOSED OF: Stainless Steel #304

COMPATIBILITY: T1000 SERIES

ACC0002



Safety Clark Socket

Used for attaching accessories which have round rod sizes 5/8"~11/16" (16~18 mm) onto 3/8" x 1 1/8" side rails, providing radial adjustment. Includes a thumb screw for tightening the Clark Socket to the side rail.

PATIENT WEIGHT CAPACITY:

Up to 1000 lb (454 kg) with various types of accessories.

COMPOSED OF: Stainless Steel #304

COMPATIBILITY: T800 SERIES

ACC0004



Side Rail Lock

Used for attaching accessories which have bar sizes 5 x 25 mm (1/4" x 1") and 15 x 15 mm (19/32" x 19/32") and is tightened using a thumb screw.

PATIENT WEIGHT CAPACITY:

Up to 1000 lb (454 kg) with various types of accessories.

COMPOSED OF: Stainless Steel #304

COMPATIBILITY: T1000 & T800 SERIES

Anesthesia Screens

ACC0006



Anesthesia Screen

Holds the surgical drape. Height and/or angle can be adjusted. Attaches to the side rail using a Clark Socket. This anesthesia screen is one part of the winged anesthesia screen.

COMPOSED OF: Stainless Steel #304

COMPATIBILITY: T1000 & T800 SERIES

ACC0007



Winged Anesthesia Screen

Holds the surgical drape. Height and/or angle can be adjusted. Attaches to the side rails using two Clark Sockets, on either side of the table. Made of two anesthesia screens (ACC0006) and a horizontal tube.

COMPOSED OF: Stainless Steel #304

COMPATIBILITY: T1000 & T800 SERIES

General Accessories

ACC0008



Infusion Stand

Fastened to the side rail using a Clark Socket. Height and angle can be adjusted manually.

COMPOSED OF: Stainless Steel #304 & Plastic

COMPATIBILITY: T1000 & T800 SERIES

ACC0025



Restraint Strap

Helps secure patient to the table during procedures. Attaches to side rails on either side of patient using included stainless steel clips. The restraint strap is tightened and loosened with an integrated metal buckle.

PATIENT WEIGHT CAPACITY: 1000 lb (454 kg)

COMPOSED OF: Stainless Steel #304 & Nylon Canvas

COMPATIBILITY: T1000 & T800 SERIES

ACC0026



Basic Strap

Performs the same function as ACC0025. Utilizes a thinner pad and is fastened to the side rails on either side of patient using hook-and-loop closures.

PATIENT WEIGHT CAPACITY: 600 lb (273 kg)

COMPOSED OF: Nylon Canvas

COMPATIBILITY: T1000 & T800 SERIES

General Accessories

ACC0045



Foot Controller

Provides the surgeon with the capability to move the table by foot when use of the hand pendant is inconvenient. The foot controller communicates with the table by way of a three-meter-long cord, and can be used to control height, Trendelenburg, reverse Trendelenburg, and lateral tilt functions.

FLUID INGRESS PROTECTION: IPX8.

COMPOSED OF:

Stainless Steel #304 & Aluminum Alloy A356

COMPATIBILITY: T1000 & T800 SERIES

ACC0063



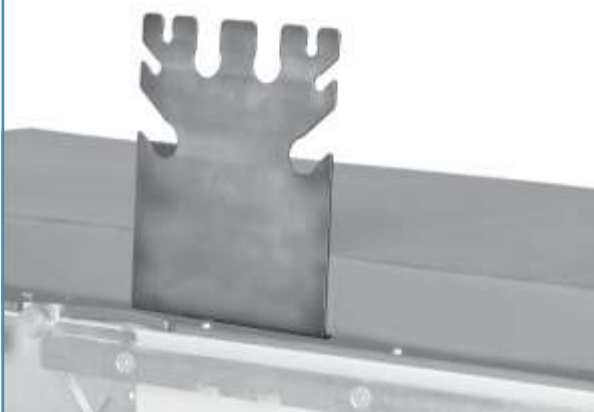
Accessory Cart

Made of stainless steel, and rests on four swivel casters for easy movement around the operating room. Three stainless steel shelves provide ample space for accessory storage.

COMPOSED OF: Stainless Steel #304

COMPATIBILITY: T1000 & T800 SERIES

ACC0117



Tubing Holder

The tubing holder, to be secured anywhere under the pad, can be used to help support plastic tubing during surgical procedures.

COMPOSED OF: Stainless Steel #304



General Accessories

ACC0041



Transfer Board

Used to give temporary support while positioning patient's legs, before or after surgery. The vinyl used is antibacterial, antistatic, and flame-retardant.

PATIENT WEIGHT CAPACITY: 600 lb (273 kg)

COMPOSED OF: Stainless Steel #304 & Vinyl

COMPATIBILITY: T1000 & T800 SERIES

Headrests

ACC0100



Multi-positioning Base Unit

With rosette gears this multi-positioning base unit is unique in its versatility to accommodate prone, supine and lateral patient positioning. It is easily installed to any AMTAI table and eliminates the need for additional headrest adaptor. It is autoclavable and compatible with Doro and Mayfield swivel adaptor.

COMPOSED OF: Stainless Steel #304, Aluminum Alloy

COMPATIBILITY: T1000 & T800 SERIES

Headrests

ACC0101



Swivel Adaptor

Connects the skull clamp or horseshoe headrest to the multi-positioning base unit. Provides 360° of rotation for flexibility in patient positioning. It is autoclavable and compatible with Doro and Mayfield's base unit and skull clamp.

COMPOSED OF: Stainless Steel #304, Aluminum Alloy

COMPATIBILITY: T1000 & T800 SERIES

ACC0102



The actual color of the product may be different.

Horseshoe Headrest with Traction Bar, Adult

The horseshoe headrest connects to the table using a multipositioning base unit and a swivel adaptor. It can support prone or supine positioning and can easily be adjusted for various patient head sizes. It is compatible with the swivel adaptors from both Doro and Mayfield. Gel pads can be removed to leave the unit for efficient cleaning (autoclavable). It also provides a rail to attach flexible arms (sold separately) under the horseshoe's frame.

COMPOSED OF:

Stainless Steel #304,
Aluminum Alloy, Silicon Gel

COMPATIBILITY:

T1000 & T800 SERIES



ACC0103



Crossbar Adapter for Base Unit

Provides insertion points for ACC0100, DORO® and other neurosurgery headrests when patient is in a seated position. Two Clark Sockets (sold separately) are needed for attachment to the side rails.

COMPOSED OF: Stainless Steel #304

COMPATIBILITY: T1000 & T800 SERIES

Headrests

ACC0035



Adjustable Headrest Adapter

Provides adjustable insertion points for DORO[®] and other neurosurgery headrests. Installed onto the back section, in both normal and reverse orientation. Standard hole diameter is 20 mm, but this dimension can be customized according to customer requirements.

COMPOSED OF: Stainless Steel #304

COMPATIBILITY: T1000 & T800 SERIES

ACC0036



Ophthalmic Headrest with Surgeon Wrist Support

Provides surgeon with full access to the facial region, while the wrist support bar helps prevent fatigue. Comes with antibacterial, antistatic, flame-retardant pad made with memory-foam to relieve pressure and prevent bedsores. Has two pins used for insertion into the T1000 or T800 back section.

PATIENT WEIGHT CAPACITY: 1000 lb (454 kg)

COMPOSED OF: Stainless Steel #304, Viscoelastic Foam with Polycarbonate Cover

COMPATIBILITY: T1000 & T800 SERIES

ASM0124



Double-joint Headrest

Can be used to replace the normal headrest, the double-joint headrest is used to support the head in lateral position. Headrest pad (CP001630) not included.

PATIENT WEIGHT CAPACITY: 1000 lb (454 kg)

COMPOSED OF: Stainless Steel #304, Phenolic Board, Aluminum Alloy, Copper

COMPATIBILITY: T1000 & T800 SERIES

Shoulder Surgery

ACC0042



Shoulder Attachment

Used to support the patient in seated position while providing surgeon with access to the shoulder region. Attaches to the T1000 short leg section to permit powered movement. Includes a 2 1/2 in (6 cm) thick, antibacterial, antistatic, flame retardant memory-foam pad.

PATIENT WEIGHT CAPACITY: 1000 lb (454 kg)

COMPOSED OF: Stainless Steel #304, Phenolic Board, Viscoelastic Foam with Polycarbonate Cover

COMPATIBILITY: T1000 SERIES

REPLACEMENT PAD:

CP001520 (Back)

CP001521 (Side)

CP001597 (Head)

ACC0043



Pneumatic Shoulder Attachment

Used to support the patient in seated position while providing surgeon with access to the shoulder region. Attaches to the T800 seat section, and uses pneumatic power for articulation. Includes a 2 1/2 in (6 cm) thick, antibacterial, antistatic, flame retardant memory-foam pad.

PATIENT WEIGHT CAPACITY: 800 lb (364 kg)

COMPOSED OF: Stainless Steel #304, Phenolic Board, Viscoelastic Foam with Polycarbonate Cover

COMPATIBILITY: T800 SERIES

REPLACEMENT PAD:

CP001520 (Back)

CP001521 (Side)

CP001597 (Head)

CP001513 (Lower back)

Arm Supports

ACC0009



Arm Board

Used to support the patient's arm during surgery. Support includes a built-in arm strap. Comes with an antibacterial, antistatic, flame-retardant pad made with memory foam to relieve pressure and prevent bedsores. Includes fastening clamp for attachment to the side rail. For use when table is at or near the level position.

PATIENT WEIGHT CAPACITY: 1000 lb (454 kg)

COMPOSED OF: Stainless Steel #304, Phenolic Board, Viscoelastic Foam with Polycarbonate Cover

COMPATIBILITY: T1000 & T800 SERIES

REPLACEMENT PAD: CP001656

ACC0010



Multi-Task Arm Board

Can be adjusted to provide patient arm support in a variety of procedures. Positioned using a ball-and-socket joint, and attaches to the surgical table side rail with a Clark Socket.

PATIENT WEIGHT CAPACITY: 1000 lb (454 kg)

COMPOSED OF: Stainless Steel #304, Aluminum Alloy, PU Foam, Nylon Strap

COMPATIBILITY: T1000 & T800 SERIES

ACC0012



Hourglass Table

Provides room for the surgeon to rest their elbows during vascular and orthopedic procedures on hands or arms. Comes with an antibacterial, antistatic, flame-retardant pad made with memory foam to relieve pressure and prevent bedsores. Equipped with an adjustable support bar a clamp for attachment to any size surgical table side rail.

PATIENT WEIGHT CAPACITY: 1000 lb (454 kg)

COMPOSED OF: Stainless Steel #304, Phenolic Board, Viscoelastic Foam with Polycarbonate Cover

COMPATIBILITY: T1000 & T800 SERIES

REPLACEMENT PAD: CP001209

Arm Supports

ACC0116



Arm Restraint Cuff

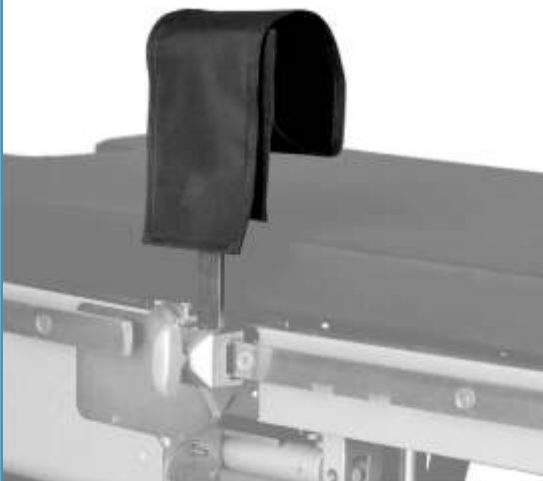
Conveniently suspend an arm with a hanging strap. Requires an anesthesia screen (ACC0006) and a Clark Socket.

PATIENT WEIGHT CAPACITY: 1000 lb (454 kg)

COMPOSED OF: Stainless Steel #304, Nylon Strap

COMPATIBILITY: T1000 & T800 SERIES

ACC0118



Wristlet

Attaches anywhere along the side rails to restrain the patient's arm from interfering with the medical procedures. Requires a side rail lock to be secured.

PATIENT WEIGHT CAPACITY: 1000 lb (454 kg)

COMPOSED OF: Stainless Steel #304, Nylon Strap

COMPATIBILITY: T1000 & T800 SERIES

Body Supports

ACC0013, ACC0014



Shoulder Supports

Provides support for left (ACC0013) and right (ACC0014) shoulders during Trendelenburg procedures. Each shoulder support is attached to the side rail using a side rail lock. Composed of stainless steel and an integrated polyurethane foam pad.

PATIENT WEIGHT CAPACITY: 1000 lb (454 kg)
COMPOSED OF: Stainless Steel #304, PU Foam
COMPATIBILITY: T1000 & T800 SERIES

ACC0015



ACC0015 Lateral Support, PU Foam, Curve (Single)
ACC0115 Lateral Support, PU Foam, Square (Single)
ACC0200 Lateral Support, PU Foam, Rectangle (Single)

Attaches anywhere along the side rails to provide the patient with lateral support. Requires a side rail lock to be secured. Includes two adjustable joints to fit patient size and position.

PATIENT WEIGHT CAPACITY: 1000 lb (454 kg)
COMPOSED OF: Stainless Steel #304, PU Foam
COMPATIBILITY: T1000 & T800 SERIES

ACC0115

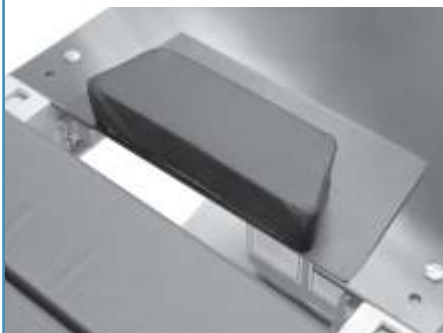


ACC0200

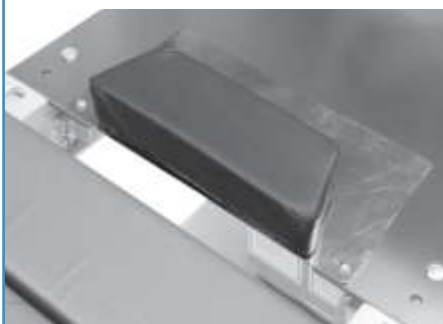


Body Supports

ACC0017-1 (-2)



ACC0018-1 (-2)



Perineal Cutout Filler Piece,

Carbon-fiber (ACC0017-1 or -2)

Stainless Steel (ACC0018-1 or -2)

Supports patient over the perineal cutout. Contains two posts which fit into holes on the seat section. Comes with an anti-bacterial, antistatic, flameretardant pad made with memory foam to relieve pressure and prevent bedsores. Carbon-fiber is used for optimal x-ray translucency during radiological exams.

PATIENT WEIGHT CAPACITY: 1000 lb (454 kg)

COMPOSED OF: Stainless Steel #304 or Carbon Fiber, Viscoelastic Foam with Polycarbonate Cover

COMPATIBILITY: T1000 & T800 SERIES

REPLACEMENT PAD:

CP001708 for ACC0017-1: Wide Cutout

CP001736 for ACC0017-2: Narrow Cutout

ACC0029



Morgan Pelvic Rest

Support bar covered in cylindrical polyurethane pad, which provides pelvic support during rectal procedures. Attaches to the surgical table side rails using two Clark Sockets.

PATIENT WEIGHT CAPACITY: 1000 lb (454 kg)

COMPOSED OF: Stainless Steel #304, PU Foam

COMPATIBILITY: T1000 & T800 SERIES

REPLACEMENT PAD: CP001559

Body Supports

ACC0028



Dorsal Cushion

Provides support during intra-vertebral disk operations. Antibacterial, antistatic, flame-retardant, memory foam pad relieves pressure and prevents bedsores.

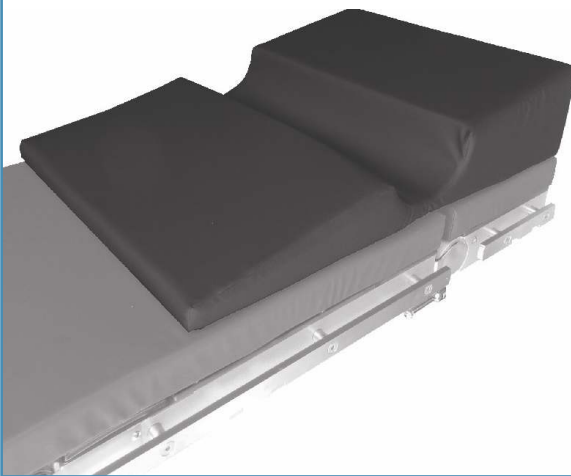
PATIENT WEIGHT CAPACITY: 1000 lb (454 kg)

COMPOSED OF: Viscoelastic Foam with PU Cover

COMPATIBILITY: T1000 & T800 SERIES

REPLACEMENT PAD: CP001250 (Dorsal Pad) & CP001251 (Head Pad)

ACC0108



Lateral Positioner, Memory Foam

This posturing device has a top layer of memory foam and can be used for all procedures requiring lateral postures. It permits a safe, quick and easy transition from supine to lateral. The patient's lower shoulder fits into the integral channel to provide exceptional patient comfort and nerve protection. The built-in headrest and auxiliary support assists in proper spinal alignment and surgical site access.

COMPOSED OF: High-density Synthetic Foam, Viscoelastic Foam with Polycarbonate Cover

COMPATIBILITY: T1000 & T800 SERIES

ACC0260



Adjustable Dorsal Cushion

Provides support during intra-vertebral disk operations. Antibacterial, antistatic, flame-retardant, memory foam pad relieves pressure and prevents bedsores.

Adjustable to fit different sizes of torso.

PATIENT WEIGHT CAPACITY: 1000 lb (454 kg)

COMPOSED OF: Viscoelastic Foam with PU Cover

COMPATIBILITY: T1000 & T800 SERIES

REPLACEMENT PAD: CP001244 (Upper right), CP001255 (Upper left), CP001256 (Lower left), CP001257 (Lower right), CP001258 (Middle)

Body Supports

ACC0051



Table Width Extender (Single)

For use with bariatric patients. Extends the width of the table top by 4" (per side) and is 45 cm long. Attaches to the back, seat or leg section using an integrated clamp. Comes with an antibacterial, antistatic, flame-retardant pad, made with memory foam to relieve pressure and prevent bedsores.

PATIENT WEIGHT CAPACITY: 1000 lb (454 kg)

COMPOSED OF: Stainless Steel #304, Phenolic Board, Aluminum Alloy 6061/T6, Viscoelastic Foam with Polycarbonate Cover

COMPATIBILITY: T1000 & T800 SERIES

REPLACEMENT PAD: CP001731

ACC0065



Spinal Frame

Provides support during spinal operations and alleviates abdominal pressure. Right and left portions can be adjusted to fit different patient sizes. The frame is best used by placing it directly on the tabletop (without the use of the table pad).

PATIENT WEIGHT CAPACITY: 1000 lb (454 kg)

COMPOSED OF: Stainless Steel #304, PU Foam

COMPATIBILITY: T1000 & T800 SERIES

Leg Supports

ACC0019



Leg Holder (Single)

Supports the leg with an integral curved foam pad. Leg holder height or angle can be adjusted using a Clark Socket, which attaches it to the surgical table side rail. The leg holder also includes a ball-and-socket joint for radial rotation and a leg strap to secure the patient's leg.

PATIENT WEIGHT CAPACITY: 1000 lb (454 kg)

COMPOSED OF: Stainless Steel #304, PU Foam, Nylon Strap

COMPATIBILITY: T1000 & T800 SERIES

ACC0020



J Stirrup (Single)

Conveniently supports leg in the lithotomy position with a hanging strap. Attaches to the side rail using a Clark Socket.

PATIENT WEIGHT CAPACITY: 1000 lb (454 kg)

COMPOSED OF: Stainless Steel #304, Nylon Strap

COMPATIBILITY: T1000 & T800 SERIES

ACC0022



Foot Rest

Supports patient's weight and provides comfort using memory foam pad. Attaches to the side rails using two side rail locks. Comes with an antibacterial, antistatic, flame-retardant pad made with memory foam to relieve pressure and prevent bedsores.

PATIENT WEIGHT CAPACITY: 1000 lb (454 kg)

COMPOSED OF: Stainless Steel #304, Viscoelastic Foam with Polycarbonate Cover

COMPATIBILITY: T1000 SERIES

REPLACEMENT PAD: CP001709

Leg Supports

ACC0023
ACC0024



Left (ACC0023) & Right (ACC0024) Foot Rest

Supports patient's weight and provides comfort using integrated polyurethane foam pad. Attaches to the surgical table side rails using a Clark Socket. Uses a rosette joint to adjust angle of the foot rest so that it is parallel to the floor, thus it can better support the patient's weight.

PATIENT WEIGHT CAPACITY: 800 lb (364 kg)

COMPOSED OF: Stainless Steel #304, PU Foam

COMPATIBILITY: T800 SERIES

ACC0071



Basic Stirrups

Boot stirrup with adjustable clamping assembly locks motion in four directions with a single handle for easy, one-step adjustment. Basic Stirrups are economical, and the molded boot floats to minimize pressure on the calf. Attaches to the surgical table side rail using Clark socket. Cushioning pads are included.

PATIENT WEIGHT CAPACITY: 350 lb (159 kg)

COMPOSED OF: Stainless Steel #304, ABS Plastic, Aluminum Alloy 6061/T6, Viscoelastic Foam with PU Cover

COMPATIBILITY: T1000 & T800 SERIES

REPLACEMENT PAD: CP001763

ACC0089



Meniscus Support

A convenient, stable device to support the flexed leg during total knee procedures. The Meniscus Support eliminates awkward sandbags and simply mounts to the side rail. The 25 cm long by 5 cm diameter (10" x 2") foot support is covered with a soft, replaceable closed-cell foam pad. The 33 cm (13") long mounting bar permits vertical height adjustment while the square 15 cm x 15 cm (19/32" x 19/32") cross section prevents unwanted rotation.

PATIENT WEIGHT CAPACITY: 1000 lbs. (454 kg).

COMPOSED OF: Stainless Steel #304, PU Foam

COMPATIBILITY: T1000 & T800 SERIES

Leg Supports

ACC0092



Split-Plate Leg Section

The Split-Plate Leg Section is a standard part of the T800 Series Surgical Table, but can also be purchased as an accessory for use with the T1000. The leg plates are manually operated, and can be raised 30°, lowered 90°, and opened 180°. Each leg plate comes with its own antibacterial, antistatic, flame retardant memoryfoam mattress pad.

PATIENT WEIGHT CAPACITY: 800 lb (364 kg)

COMPOSED OF: Stainless Steel #304, Aluminum Alloy, Phenolic Board, Viscoelastic Foam with Polycarbonate Cover

COMPATIBILITY: T1000 & T800 SERIES

Orthopedic

ACC0061, ACC0062

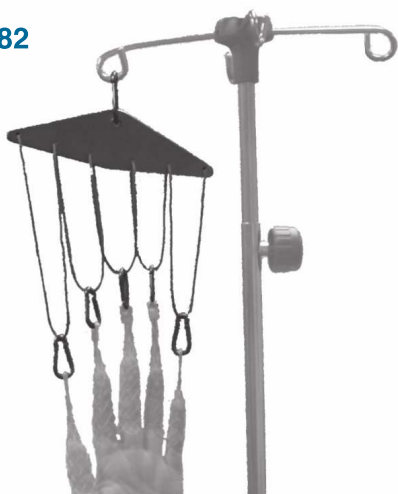


T1000/T800 Orthopedic Extension

Complete set of orthopedic accessories for use with the T1000/T800 Series. The mounting bracket is attached to the surgical table, and then a single carbon fiber abductor bar is easily attached to the mounting bracket. Includes full range of accessories needed for lower limb traction. Please see our Orthopedic Extension Catalog for complete information.

PATIENT WEIGHT CAPACITY: 600 lb (273 kg)

ACC0082



Equalizing Device

Provides equal traction to all five fingers, and is autoclavable. Used with Mesh Finger Traps (ACC0083) or Stainless Steel Finger Traps (ACC0084-1 ~ ACC0084-4)

COMPOSED OF: Stainless Steel #304

COMPATIBILITY: T1000 & T800 SERIES

ACC0084



Stainless Steel Finger Traps (Single and separately)

Used to provide traction for fingers during orthopedic procedures, these long-lasting wire traps can be autoclaved.

ACC0084-1 XS

ACC0084-2 S

ACC0084-3 M

ACC0084-4 L

COMPOSED OF: Stainless Steel #316

COMPATIBILITY: T1000 & T800 SERIES

ACC0046, ACC0047

Cassette Top for T1000 Series (ACC0046)

Attaches to the top of the T1000 tables without a kidney elevator to permit convenient lateral insertion of the x-ray cassettes. Covers the entire length and width of the table, and is easily removable. Made of phenolic board for radiolucency.

Cassette Top for T1000K Series (ACC0047)

Attaches to the top of the T1000 tables with a kidney elevator to permit convenient lateral insertion of the x-ray cassettes. Covers the entire length and width of the table, and is easily removable. Made of phenolic board for radiolucency.

-1 = Wide perineal cut out

-2 = Narrow perineal cut out

PATIENT WEIGHT CAPACITY: 1000 lb (454 kg)

COMPOSED OF: Phenolic Board, and Stainless Steel #304



ACC0048, ACC0049

Cassette Top for T800 Series (ACC0048)

Attaches to the top of the T800 tables without a kidney elevator to permit convenient lateral insertion of the x-ray cassettes. Covers the entire length and width of the table, and is easily removable. Made of phenolic board for radiolucency.

Cassette Top for T800K Series (ACC0049)

Attaches to the top of the T800 tables with a kidney elevator to permit convenient lateral insertion of the x-ray cassettes. Covers the entire length and width of the table, and is easily removable. Made of phenolic board for radiolucency.

PATIENT WEIGHT CAPACITY: 800 lb (364 kg)

COMPOSED OF: Phenolic Board, and Stainless Steel #304



Imaging

ACC0021



Imaging Extender, Carbon-fiber

Our carbon-fiber imaging extender can be installed on an AMTAI's surgical table for the surgeries requiring to obtain 2D and 3D images using mobile X-ray, C-arm, O-arm, or mobile CT during surgical procedures. It includes the following items:

- **ASM0821 Carbon-fiber Imaging Board:** It is made of carbon fiber for supporting patient and taking 3D images. Its valid area for 3D image is 101x48cm (39 3/4" x 18 29/32") and 2D image is 130x48 cm (51 9/64" x 18 29/32").
- **ASM0597 Imaging Extender Cart:** It is equipped with 4 swivel casters for easy set-up and storage.
- **ASM0599 Supporting Stand for Imaging Board:** It is made of mainly stainless steel 304 and must be placed at any location underneath Carbon-fiber Imaging Board for supporting it without tipping when a patient is laid it.

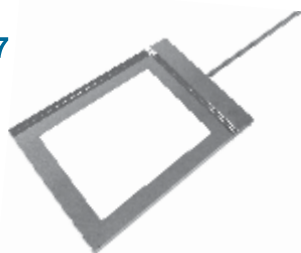
ACC0077 (optional)



Optional ACC0077 Movable Side Rail is available when needed for connecting other AMTAI table accessories onto Carbon-fiber Imaging Board.

PATIENT WEIGHT CAPACITY: 227 kg (500 lb)
COMPOSED OF: Aluminum Alloy, Carbon-fiber, Stainless Steel #304, Viscoelastic Foam with Polycarbonate Cover.
COMPATIBILITY: AMTAI T1000 Series & T800 Series surgical tables
REPLACEMENT PAD: CP001291

ACC0037



Cassette Slide

Slides X-ray cassette to appropriate position underneath the cassette tunnels of operating table.

COMPOSED OF: Stainless Steel #304
COMPATIBILITY: T1000 & T800 SERIES

ACC0064



IA Extender

Useful in urology and other procedures which require ample IA (imaging access) coverage. In normal orientation it can be attached to the T1000 short leg section. Includes a perineal cutout. Has insertion points which are identical to those of the table so that other accessories such as drain pans, Uro catcher system, etc. can be attached.

PATIENT WEIGHT CAPACITY: 1000 lb (454 kg)
COMPOSED OF: Stainless Steel #304, Phenolic Board, Viscoelastic Foam with Polycarbonate Cover
COMPATIBILITY: T1000 SERIES
REPLACEMENT PAD: CP000764

Fluid Collection

ACC0016



Stainless Steel Drain Pan

Used to collect liquid drainage during urological and gynecological procedures. Attaches to the bottom of the T1000 seat section.

COMPOSED OF: Stainless Steel #304

COMPATIBILITY: T1000 SERIES

ACC0033



Deep Plastic Drain Pan

Used to collect liquid drainage during urological and gynecological procedures. Attaches to the bottom of either the T800 and T1000 (read compatibility below) seat section, or the IA Extender.

COMPOSED OF: Plastic

COMPATIBILITY: T800 SERIES and T1000 SERIES with quick release leg section plate

ACC0034



Metal Drain Pan

Used to collect liquid drainage during urological and gynecological procedures. Attaches to the bottom of either the T800 seat section, or the IA Extender.

COMPOSED OF: Stainless Steel #304

COMPATIBILITY: T800 SERIES

Accessories Listed by Procedure

BARIATRIC PROCEDURE			
T1000		T800	
*	Stirrups (pair) +2 Side Rail Clamps	*	Stirrups (pair) +2 Side Rail Clamps
ACC0010	2 Multi-Task Arm Boards	ACC0010	2 Multi-Task Arm Boards
ACC0001	+2 Clark Sockets	ACC0002	+2 Safety Clark Sockets
ACC0025	Restraint Strap	ACC0025	Restraint Strap
ACC0051	4 Table Width Extenders	ACC0051	4 Table Width Extenders
NEUROSURGERY PROCEDURES			
T1000		T800	
Prone or Supine Neurosurgery			
ACC0035	Adjustable Headrest Adapter	ACC0035	Adjustable Headrest Adapter
ACC0100	Multi-positioning Base Unit	ACC0100	Multi-positioning Base Unit
ACC0101	Swivel Adapter	ACC0101	Swivel Adapter
ACC0102	Horseshoe Headrest with Extension Bar, adult	ACC0102	Horseshoe Headrest with Extension Bar, adult
	DORO® Neurosurgery Headrest		DORO® Neurosurgery Headrest
ACC0009	2 Arm Boards	ACC0009	2 Arm Boards
ACC0027	Radiolucent Spine Surgery Frame	ACC0027	Radiolucent Spine Surgery Frame
or	or	or	or
ACC0028	Dorsal Cushion	ACC0028	Dorsal Cushion
or	or	or	or
ACC0065	Spinal Frame	ACC0065	Spinal Frame
ACC0025	Restraint Strap	ACC0025	Restraint Strap
Seated Neurosurgery			
ACC0035	Adjustable Headrest Adapter	ACC0035	Adjustable Headrest Adapter
ACC0100	Multi-positioning Base Unit	ACC0100	Multi-positioning Base Unit
ACC0101	Swivel Adapter	ACC0101	Swivel Adapter
ACC0102	Horseshoe Headrest with Extension Bar, adult	ACC0102	Horseshoe Headrest with Extension Bar, adult
ACC0103	Crossbar Adapter for Base Unit	ACC0103	Crossbar Adapter for Base Unit
ACC0001	+2 Clark Sockets	ACC0002	+2 Safety Clark Sockets
*	DORO® Neurosurgery Headrest	*	DORO® Neurosurgery Headrest
ACC0010	2 Multi-Task Arm Boards	ACC0010	2 Multi-Task Arm Boards
ACC0001	+2 Clark Sockets	ACC0002	+2 Safety Clark Sockets
ACC0025	Restraint Strap	ACC0025	Restraint Strap
ACC0022	Foot Rest	ACC0023	Left Foot Rest
ACC0004	+2 Side Rail Locks	ACC0024	Right Foot Rest
		ACC0002	+2 Safety Clark Sockets

* Please see Outsourced Accessory and DORO Neurosurgery Headrest Price Lists. Available from your local distributor.

Accessories Listed by Procedure

OPHTHALMIC, ENT & PLASTIC PROCEDURES			
T1000		T800	
ACC0036	Ophthalmic Headrest with Surgeon Wrist Support	ACC0036	Ophthalmic Headrest with Surgeon Wrist Support
ACC0009	2 Arm Boards	ACC0009	2 Arm Boards
ACC0025	Restraint Strap	ACC0025	Restraint Strap
ACC0022	Foot Rest	ACC0023	Left Foot Rest
ACC0004	+2 Side Rail Locks	ACC0024	Right Foot Rest
		ACC0002	+2 Safety Clark Sockets
ACC0045	Foot Controller	ACC0045	Foot Controller
ORTHORPEDICS			
T1000		T800	
ACC0061	T1000 Orthopedic Extension	ACC0062	T800 Orthopedic Extension
ACC0082	Equalizing Devices	ACC0082	Equalizing Devices
ACC0084	Stainless Steel Finger Traps	ACC0084	Stainless Steel Finger Traps
ACC0009	Arm Board	ACC0009	Arm Board
ACC0010	Multi-Task Arm Board	ACC0010	Multi-Task Arm Board
ACC0001	+ Clark Socket	ACC0002	+Safety Clark Socket
ACC0019	2 Leg Holders	ACC0019	2 Leg Holders
ACC0001	+2 Clark Sockets	ACC0002	+2 Safety Clark Sockets
*	Arthroscopic Leg Holder + Clark Socket	*	Arthroscopic Leg Holder + Clark Socket

* Please see Outsourced Accessory Price List. Available from your local distributor.

Accessories Listed by Procedure

UROLOGY			
T1000		T800	
ACC0064	IA Extender (for tables without slide)	ACC0064	IA Extender (for tables without slide)
ACC0009	Arm Boards	ACC0009	Arm Boards
ACC0045	Foot Controller	ACC0045	Foot Controller
ACC0041	Transfer Board (when Patient is in reverse orientation)	ACC0041	Transfer Board (when Patient is in reverse orientation)
ACC0006 ACC0001 <u>or</u> *	Anesthesia Screen +Clark Socket <u>or</u> Flexible Anesthesia Screen +2 Clark Sockets	ACC0006 ACC0002 <u>or</u> *	Anesthesia Screen +Safety Clark Socket <u>or</u> Flexible Anesthesia Screen +2 Clark Sockets
ACC0016 <u>or</u> *	Metal Drain Pan <u>or</u> Uro Catcher System +Fluid Collector Bags	ACC0033 <u>or</u> ACC0034 <u>or</u> *	Deep Plastic Drain Pan <u>or</u> Metal Drain Pan <u>or</u> Uro Catcher System +Fluid Collector Bags
ACC0019 ACC0001 <u>or</u> ACC0020 ACC0001 <u>or</u> * <u>or</u> *	2 Leg Holders +2 Clark Sockets <u>or</u> 2 J Stirrups +2 Clark Sockets <u>or</u> Cysto-Lift Knee Crutches (pair) +2 Side Rail Locks <u>or</u> Stirrups (pair) +2 Side Rail Locks	ACC0019 ACC0002 <u>or</u> ACC0020 ACC0002 <u>or</u> * <u>or</u> *	2 Leg Holders +2 Safety Clark Sockets <u>or</u> 2 J Stirrups +2 Safety Clark Sockets <u>or</u> Cysto-Lift Knee Crutches (pair) +2 Side Rail Locks <u>or</u> Stirrups (pair) +2 Side Rail Locks

* Please see Outsourced Accessory Price List. Available from your local distributor.

Product Index - Alphabetical

	Name	Item ID	Page	
A	Accessory Cart	ACC0063	4	
	Anesthesia Screen	ACC0006	2	
	Anesthesia Screen, Winged	ACC0007	2	
	Arm Board	ACC0009	9	
	Arm Board, Multi-task	ACC0010	9	
	Arm Restraint Cuff	ACC0116	10	
C	Cassette Slide	ACC0037	20	
	Cassette Top (T1000 Series with K)	ACC0047	19	
	Cassette Top (T1000 Series without K)	ACC0046	19	
	Cassette Top (T800 Series with K)	ACC0049	19	
	Cassette Top (T800 Series without K)	ACC0048	19	
	Clark Socket (T1000 Series)	ACC0001	1	
	Clark Socket, Safety (T800 Series)	ACC0002	1	
	Crossbar Adapter for Base Unit	ACC0103	6	
	D	Dorsal Cushion	ACC0028	13
		Dorsal Cushion, Adjustable	ACC0260	13
Drain Pan, Metal (T800 Series)		ACC0034	21	
Drain Pan, Plastic		ACC0033	21	
Drain Pan, Stainless Steel (T1000 Series)		ACC0016	21	
E	Equalizing Device	ACC0082	18	
F	Finger Traps, Stainless Steel	ACC0084	18	
	Foot Controller	ACC0045	4	
	Foot Rest (T1000 Series)	ACC0022	15	
	Foot Rest, Left (T800 Series)	ACC0023	16	
	Foot Rest, Right (T800 Series)	ACC0024	16	
	H	Headrest Adapter, Adjustable	ACC0035	7
Headrest with Surgeon Wrist Support, Ophthalmic		ACC0036	7	
Headrest, Double-joint		ASM0124	7	
Horseshoe Headrest with Extension Bar, adult		ACC0102	6	
Hourglass Table		ACC0012	9	
I	IA Extender	ACC0064	20	
	Imaging Extender, Carbon-fiber	ACC0021	20	
	Infusion Stand	ACC0008	3	
J	J Stirrup	ACC0020	15	
L	Lateral Positioner, Memory Foam	ACC0108	13	
	Lateral Support	ACC0015	11	
	Lateral Support, Rectangle	ACC0200	11	
	Lateral Support, Square	ACC0115	11	
	Leg Holder	ACC0019	15	

Product Index - Alphabetical

	Name	Item ID	Page	
M	Meniscus Support	ACC0089	16	
	Morgan Pelvic Rest	ACC0029	12	
	Movable Side Rail	ACC0077	20	
	Multi-positioning Base Unit	ACC0100	5	
O	Orthopedic Extension (T1000 Series)	ACC0061	18	
	Orthopedic Extension (T800 Series)	ACC0062	18	
P	Perineal Cutout Filler Piece, Carbon-fiber	ACC0017	12	
	Perineal Cutout Filler Piece, Stainless Steel	ACC0018	12	
S	Shoulder Attachment (T1000 Series)	ACC0042	8	
	Shoulder Attachment, Pneumatic (T800 Series)	ACC0043	8	
	Shoulder Support, Left	ACC0013	11	
	Shoulder Support, Right	ACC0014	11	
	Side Rail Lock	ACC0004	1	
	Spinal Frame	ACC0065	14	
	Split-plate Leg Section (T1000 Series)	ACC0092	17	
	Stirrups, Basic	ACC0071	16	
	Strap, Basic	ACC0026	3	
	Strap, Restraint	ACC0025	3	
	Swivel Adapter	ACC0101	6	
	T	Table Width Extender	ACC0051	14
		Transfer Board	ACC0041	5
		Tubing Holder	ACC0117	4
W	Wristlet	ACC0118	10	

Product Index - by Item ID

Item ID	Name	Page
ACC0001	Clark Socket (T1000 Series)	1
ACC0002	Clark Socket, Safety (T800 Series)	1
ACC0004	Side Rail Lock	1
ACC0006	Anesthesia Screen	2
ACC0007	Anesthesia Screen, Winged	2
ACC0008	Infusion Stand	3
ACC0009	Arm Board	9
ACC0010	Arm Board, Multi-task	9
ACC0012	Hourglass Table	9
ACC0013	Shoulder Support, Left	11
ACC0014	Shoulder Support, Right	11
ACC0015	Lateral Support	11
ACC0016	Drain Pan, Stainless Steel (T1000 Series)	21
ACC0017	Perineal Cutout Filler Piece, Carbon-fiber	12
ACC0018	Perineal Cutout Filler Piece, Stainless Steel	12
ACC0019	Leg Holder	15
ACC0020	J Stirrup	15
ACC0021	Imaging Extender, Carbon-fiber	20
ACC0022	Foot Rest (T1000 Series)	15
ACC0023	Foot Rest, Left (T800 Series)	16
ACC0024	Foot Rest, Right (T800 Series)	16
ACC0025	Strap, Restraint	3
ACC0026	Strap, Basic	3
ACC0028	Dorsal Cushion	13
ACC0029	Morgan Pelvic Rest	12
ACC0033	Drain Pan, Plastic	21
ACC0034	Drain Pan, Metal (T800 Series)	21
ACC0035	Headrest Adapter, Adjustable	7
ACC0036	Headrest with Surgeon Wrist Support, Ophthalmic	7
ACC0037	Cassette Slide	20
ACC0041	Transfer Board	5
ACC0042	Shoulder Attachment (T1000 Series)	8
ACC0043	Shoulder Attachment, Pneumatic (T800 Series)	8
ACC0045	Foot Controller	4
ACC0046	Cassette Top (T1000 Series without K)	19
ACC0047	Cassette Top (T1000 Series with K)	19
ACC0048	Cassette Top (T800 Series without K)	19
ACC0049	Cassette Top (T800 Series with K)	19

Product Index - by Item ID

Item ID	Name	Page
ACC0051	Table Width Extender	14
ACC0061	Orthopedic Extension (T1000 Series)	18
ACC0062	Orthopedic Extension (T800 Series)	18
ACC0063	Accessory Cart	4
ACC0064	IA Extender	20
ACC0065	Spinal Frame	14
ACC0077	Movable Side Rail	20
ACC0082	Equalizing Device	18
ACC0084	Finger Traps, Stainless Steel	18
ACC0089	Meniscus Support	16
ACC0092	Split-plate Leg Section (T1000 Series)	17
ACC0100	Multi-positioning Base Unit	5
ACC0101	Swivel Adapter	6
ACC0102	Horseshoe Headrest with Extension Bar, adult	6
ACC0103	Crossbar Adapter for Base Unit	6
ACC0108	Lateral Positioner, Memory Foam	12
ACC0115	Lateral Support, Square	11
ACC0116	Arm Restraint Cuff	10
ACC0117	Tubing Holder	4
ACC0118	Wristlet	11
ASM0124	Headrest, Double-joint	7
ACC0200	Lateral Support, Rectangle	11
ACC0260	Dorsal Cushion, Adjustable	13

ACCESSORIES



AMTAI Medical Equipment, Inc.
An ISO 13485 Certified Manufacturer

5605 Primavera Ct.
Raleigh, NC 27616
USA

TEL: +1 919-872-1803
sales@amtai.com
service@amtai.com
www.amtai.com

Advanced Medical Technology And Innovation

AMTAI