

SonoSite M-Turbo

VERSATILE
ULTRASOUND.





HIGH RESOLUTION IMAGING
ACROSS THE POINT OF CARE .

Our most versatile system for abdominal, nerve, vascular, cardiac, venous access, pelvic, and superficial imaging. The M-Turbo® ultrasound system gives you striking image quality with sharp contrast resolution and clear tissue delineation. This ultrasound equipment lets you visualize detail, improving your ability to differentiate structures, vessels and pathology. Because the more you can see, the more you can do for your patients.

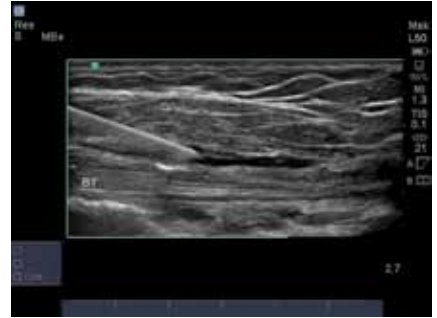




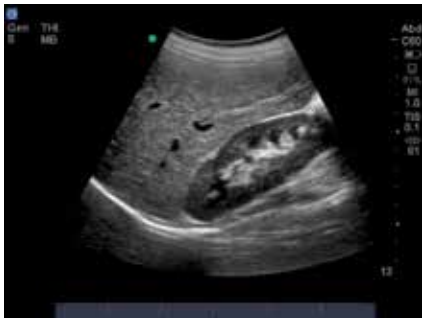
Abdomen - Pelvis - Free Fluid



OB Cord



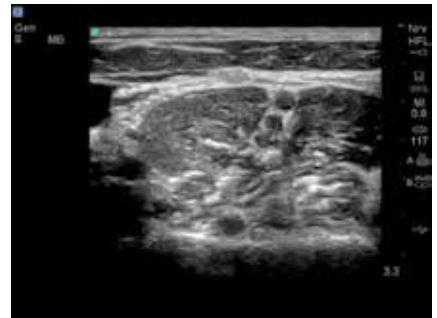
Shoulder Injection with Needle



Liver, Right Kidney



Heart Parasternal Short Axis



Brachial Plexus Nerves Root

INCREASED COLOR PERFORMANCE.

The M-Turbo® ultrasound system offers striking image quality. Proprietary algorithms optimize multiple imaging parameters so you get essential information quickly and easily.

TURBO TECHNOLOGY

SonoADAPT Tissue Optimization – eliminating complicated manipulation of multiple controls.

SonoHD Imaging Technology – reducing speckle noise and other image artifacts while preserving and sharpening tissue information.

SonoMB Multi-beam Imaging – increasing resolution of small structures and enhancing border delineation.

Advanced Needle Visualization – aiding needle visualization while maintaining striking image quality of the target and surrounding anatomy.

ColorHD™ Technology – increasing color performance, sensitivity and frame rates for more diagnostic information.

Point-of-Care Applications – Anesthesia, Critical Care, Cardiology, Cardiovascular Disease Management, Emergency Medicine, Musculoskeletal, OB/Gyn, Radiology, Vascular, Surgery, Vet Imaging, Women's Health.

SonoSite M-Turbo

AT A GLANCE

- Premium image quality
- Drop tested at 3 feet/91.4 cm
- Splash resistant user interface
- Quick boot-up time
- Easy to operate
- Battery-powered and wireless capabilities for true mobility
- Magnesium case for lightweight strength
- Backlit keyboard is easier on the eyes



Capture quality video clips up to 60 seconds long



Battery-powered and wireless capabilities for true mobility



PC- and Mac-friendly for effortless data management with 2 high-speed USB 2.0 ports

Backlit keyboard is easier on the eyes

Magnesium case for lightweight strength



Weighs 3.4 kg/7.5 lbs. with battery

SONOSITE M-TURBO TRANSDUCERS



L38xi ●●

10-5 MHz Linear

Applications:

lung, nerve, small parts, arterial, venous

Scan depth: 9 cm



HFL38x ●●

13-6 MHz Linear

Applications:

breast, CIMT, musculoskeletal, nerve, small parts, vascular, venous

Scan depth: 6 cm



HFL50x ●

15-6 MHz Linear

Applications:

breast, musculoskeletal, nerve, small parts

Scan depth: 6 cm



L25x ●●●●

13-6 MHz Linear

Applications:

lung, musculoskeletal, nerve, superficial, arterial, venous, ophthalmic

Scan depth: 6 cm



C11x

8-5 MHz Curved

Applications:

abdominal, neonatal, nerve, arterial, venous, cardiology (vet)

Scan depth: 13 cm



C60xi ●●●●

5-2 MHz Curved

Applications:

abdominal, musculoskeletal, nerve, gynecology, obstetrics

Scan depth: 30 cm



ICTx ●

8-5 MHz Curved

Applications:

gynecology, obstetrics

Scan depth: 13 cm



P21x

5-1 MHz Phased

Applications:

abdominal, cardiology, obstetrics, orbital, TCD

Scan depth: 35 cm



P10x ●

8-4 MHz Phased

Applications:

pediatric abdominal, pediatric cardiology, neonatal head

Scan depth: 14 cm



SLAx

13-6 MHz Linear

Applications:

musculoskeletal, nerve, superficial, vascular, venous

Scan depth: 6 cm



TEExi

8-3 MHz Multi

Applications:

adult cardiology, multiplane transesophageal 180° rotation of the imaging plane, providing a 360° field of view

Scan depth: 18 cm



C8x ●

8-5 MHz Curved

Applications:

prostate

Scan depth: 11.5 cm

- DirectClear Technology.
- Optional Armored Cable.
- Needle guides and kits available.
- A transverse needle guide available.

SYSTEM SPECIFICATIONS

System weight	7.5 lbs./3.4 kg with battery
Dimensions	11.9" x 10.8" x 3.1" 30.2 cm x 27.4 cm x 7.9 cm (L x W x H)
Display	10.4"/26.4 cm diagonal LCD (NTSC or PAL)
Architecture	All-digital broadband
Dynamic range	Up to 165 dB
Gray scale	256 shades
HIPAA compliance	Comprehensive tool set

IMAGING MODES

Broadband, Multifrequency Imaging: 2D / Tissue Harmonic Imaging / M-Mode
Velocity Color Doppler / Color Power Doppler
PW, PW Tissue Doppler and CW
Doppler angle, correct after freeze

IMAGE PROCESSING

SonoADAPT™ Tissue Optimization
SonoHD™ Imaging Technology
Advanced Needle Visualization (SonoMBe™ Imaging)
Dual Imaging, Duplex Imaging, 2x pan/zoom capability, Dynamic range and gain

USER INTERFACE AND

REMAPPABLE CONTROLS

Softkeys to drive advanced features
Programmable A and B keys: each can be assigned by the user for increased ease of use
Alphanumeric elastomeric QWERTY keyboard
Track pad with select key for easy operation and navigation
Doppler controls: angle, steer, scale, baseline, gain and volume
Image acquisition keys: review, report, Clip Store, save
Dedicated AutoGain and exam keys to allow quick activation

TRANSDUCERS

Broadband/Multifrequency:

Broadband and Multifrequency: Linear Array, Curved Array, Phased Array, Multiplane TEE and Micro-Convex
Single Frequency: Cardiac Static Pencil

Exam types: abdominal, breast, cardiology, gyn, lung, musculoskeletal, neonatal, nerve, ob, ophthalmic, orbital, small parts, spine, superficial, TCD, arterial, venous

DURABILITY

Drop-tested at 3 feet/91.4 cm

APPLICATION SPECIFIC CALCULATIONS

OB/GYN/Fertility: Diameter/ellipse measurements, volume, ten follicle measurements, estimated fetal weight, established due date, gestational age, last menstrual period, growth charts, user-defined tables, multiple user-selectable authors, ratios, amniotic fluid index, patient report, humerus and tibia measurement and charts

Vascular: Diameter/ellipse/trace measurements, volume, volume flow, percent diameter and area reduction, Lt/Rt CCA, ICA, ECA, ICA/CCA ratio, time average mean (TAM), peak trace, ICA/CCA ratio, angle correction, patient report

CIMT (Carotid Intima Media Thickness): Embedded SonoCalc™ IMT software (optional) – automatic edge detection with mean and maximum thickness reporting

Cardiac: Automated Cardiac Output package and patient report including: ventricular, aortic and atrial measurements; ejection fraction, volume measurements, Simpson's rule, continuity equation, pressure half-time and cardiac output; PA AT, TV E, A, PHT, TVI, MV time, Pulm Veins

Transcranial Doppler (TCD): Complete TCD package including Time Average Peak (TAP)

ONBOARD IMAGE AND CLIP STORAGE/REVIEW

8 GB internal Flash memory storage capability
Potential to store 30,000 images or 960 2-second clips
Clip Store capability (maximum single clip length: 60 seconds)

Clip Store capability via either number of heart cycles (using the ECG) or time base Maximum storage in ECG beats mode is 10 heart cycles. Maximum storage in time base mode is 60 seconds

Cine review up to 255 frame-by-frame images

MEASUREMENT TOOLS, PICTOGRAMS AND ANNOTATIONS

2D: Distance calipers, ellipse and manual trace

Doppler: Velocity measurements, pressure half time, auto and manual trace

M-Mode: Distance and time measurements, heart rate calculation

User-selectable text and pictograms

User-defined, application-specific annotations

Biopsy guidelines

CONNECTIVITY (EXTERNAL DATA MANAGEMENT)

Q-path ultrasound management system
DICOM® Image Management (TCP/IP): Print and Store, Modality Work List, Storage Commit: Modality, Perform, Procedure Step

PC Workstation Image Management (TCP/IP, USB): SiteLink™ – allows transfer, archiving, viewing and printing of high resolution bitmap images/clips, and batch compression to JPEG on PCs

Direct writing capability to USB 2.0 mass storage removable media (PC and MAC compatible)

Supported export formats: MPEG-4 (H.264), JPEG, BMP, and HTML

CONNECTIVITY (SYSTEM PORTS)

S-video (in/out) to VCR for record and playback
DVI output

Composite video output (NTSC/PAL) to VCR or video printer

Audio output

Integrated speakers

Ethernet or wireless image/data transfer

USB ports (2)

RS-232 transfer

POWER SUPPLY

System operates via battery or AC power
Rechargeable lithium-ion battery AC: universal power adapter, 100-240 VAC, 50/60 Hz input, 15 VDC output

EXTERNAL VIDEO AND AUDIO

S-video (in/out) to VCR or DVD for record and playback

RGB or DVI output to external LCD display

Composite video output (NTSC/PAL) to VCR or DVD, video printer or external LCD display

Audio output

Integrated speakers

H-UNIVERSAL™ STAND AND PERIPHERALS

Transducer and gel holders

Optional Triple Transducer Connect (TTC) to quickly activate transducers electronically

Optional foot switch

Optional PowerPark and PowerPack

OPTIONAL PERIPHERALS

Printers: Medical-grade black and white or color

External storage devices: Medical-grade DVD

External data input devices: Bar code reader

ECG module: 3-lead ECG – works with standard ECG leads and electrodes

External analog ECG input also available

USB bar code reader

Mac is a trademark of Apple Inc., registered in the U.S. and other countries.

DICOM is the registered trademark of the National Electrical Manufacturers Association for its standards publications relating to digital communications of medical information.

FUJIFILM
Value from Innovation

FUJIFILM SonoSite, Inc.
Worldwide Headquarters
21919 30th Drive SE, Bothell, WA 98021-3904
Tel: +1 (425) 951 1200 or +1 (877) 657 8050
Fax: +1 (425) 951 6800
www.sonosite.com

SonoSite Worldwide Offices

FUJIFILM SonoSite Australasia Pty Ltd: Australia 1300 663 516
FUJIFILM SonoSite Australasia Pty Ltd: New Zealand 0800 888 204
FUJIFILM SonoSite Brazil +55 11 5574 7747
FUJIFILM SonoSite Canada Inc. +1 888 554 5502
FUJIFILM (China) Investment Co., Ltd +86 21 5010 6000
FUJIFILM SonoSite GmbH – Germany +49 69 80 88 40 30
FUJIFILM SonoSite, Inc. – USA +1 425 951 1200

FUJIFILM SonoSite India Pvt Ltd. +91 124 288 1100
FUJIFILM SonoSite Iberica SL – Spain +34 91 123 84 51
FUJIFILM Medical Co., Ltd. – Japan +81 3 0418 7190
FUJIFILM SonoSite Korea Ltd +65 6380 5589
FUJIFILM SonoSite Ltd – United Kingdom +44 1462 341 151
FUJIFILM SonoSite SARL – France +33 182 880 702